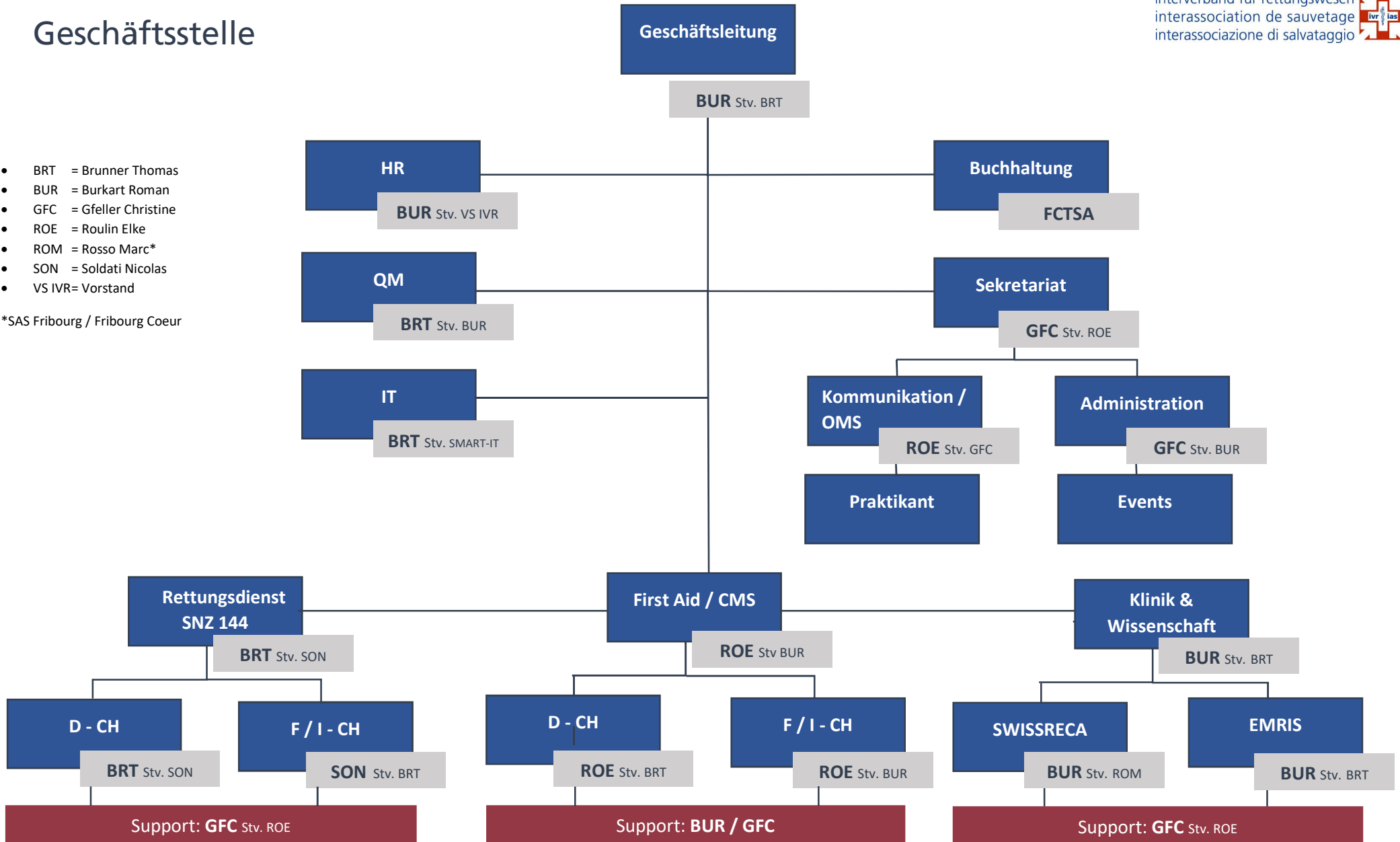


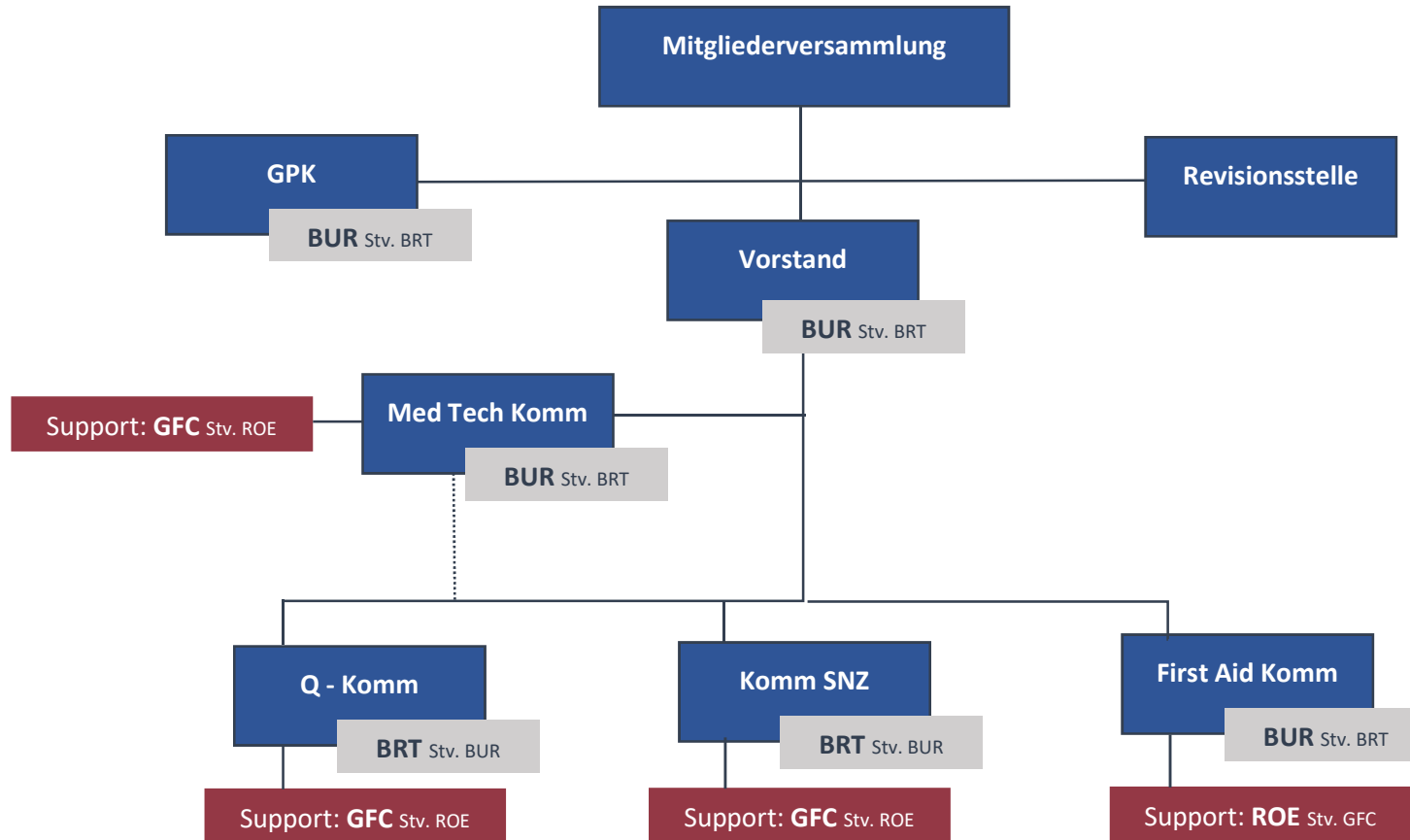
# Geschäftsstelle

- BRT = Brunner Thomas
- BUR = Burkart Roman
- GFC = Gfeller Christine
- ROE = Roulin Elke
- ROM = Rosso Marc\*
- SON = Soldati Nicolas
- VS IVR= Vorstand

\*SAS Fribourg / Fribourg Coeur



# Vertretung IVR-interne Gremien



# Vertretung IVR-externe Gremien

